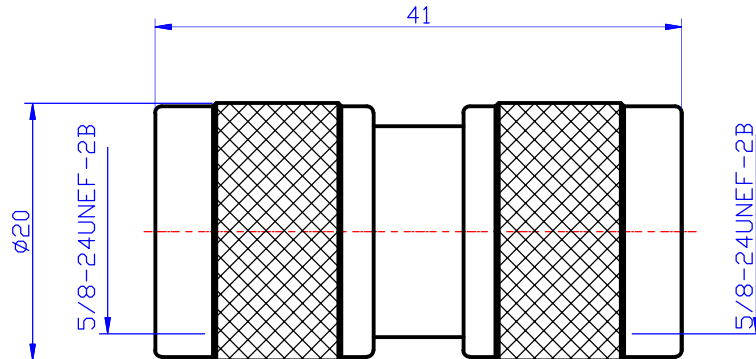


# Technical Data sheet

Adapter  
N-(m) to N-(m)

03.04.047



Site 1: N-male  
Site 2: N-male

ALL DIAMENSIONS IN MILLIMETERS

## Electrical characteristics

Impedance	50 $\Omega$
Frequency Range	DC - 6.0 GHz
VSWR	$\leq 1.1$ (0-3 GHz)
Intermodulation (PIM)	$\leq -120$ dBc (2x43dBm)
RF Leakage @ 1GHz	$\geq 90$ dB
Dielectric withstanding voltage (at sea level)	1500V
Working Voltage (at sea level)	1000V
Insulation resistance	$\geq 5000$ M $\Omega$

## Mechanical characteristics

Coupling nut torque (recommended)	0.7 - 1.1 Nm
Coupling nut retention force	$\geq 450$ N
Durability (matings)	$\geq 500$
Temperature range	-55°C to +155°C

Type	Material	Plating
Center Conductor	Brass	Gold
Insulation	PTFE	-
Body	Brass	Nickel
Gaskets	Silicone rubber	-