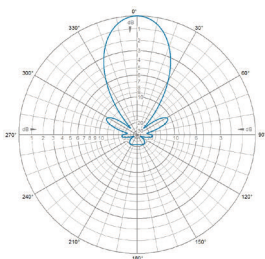
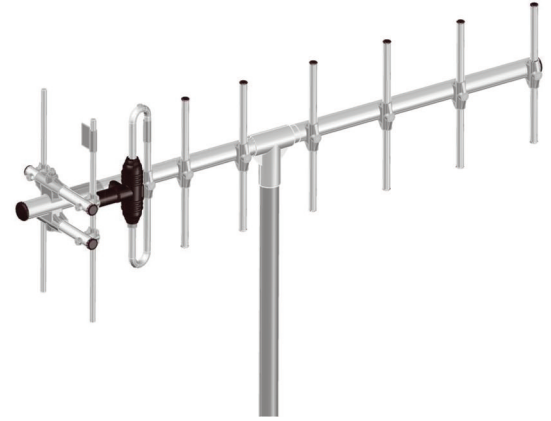


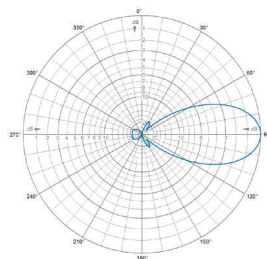
7043390-CM1

V-Pol or H-Pol | 8-Element Yagi | 54° | 10 dBd

Electrical Characteristics	
Frequency range	380 - 410 MHz
Input impedance	50 Ω
VSWR	<1.5:1
Maximum input power	150 W
Polarisation	Vertical or Horizontal
Gain	10 dBd / 12.2 dBi
Front to back ratio	>20 dB over full bandwidth
3dB Beamwidth	Vertical: 45° Horizontal: 54°
Lightning protection	DC Grounded
Mechanical Characteristics	
Connection	N Female + 3m RG213 cable
Construction materials	Boom, 32 mm dia., aluminium Elements, 12.7 mm dia., aluminium Balun, fully moulded enclosure
Dimensions (Length)	1486 mm (l) 440mm (w)
Weight	4.9 kg
Wind loading	110 N @ 45 ms ⁻¹
Protection class	IP68
Operational temperature range	-40°C to +65°C
Mounting Options	
Supplied with 1 metre x 32mm dia. glassfibre mounting pole for rotator mounting. Antenna is supplied in two parts for ease of transportation.	



Horizontal | 395MHz



Vertical | 395MHz

Quoted performance parameters are provided to offer typical or range values only and may vary as a result of normal manufacturing and operational conditions. Extreme operational conditions and/or stress on structural supports is beyond our control. Such conditions may result in damage to this product. Alterations to products may be made without notice.